

Aventa Universal Remote Control and Saphir Universal Remote Control:

These Universal Remote Controls (URCs) can be set for use with the following equipment:

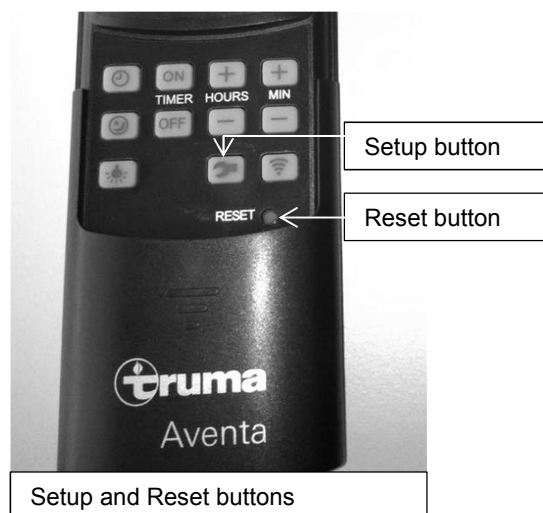
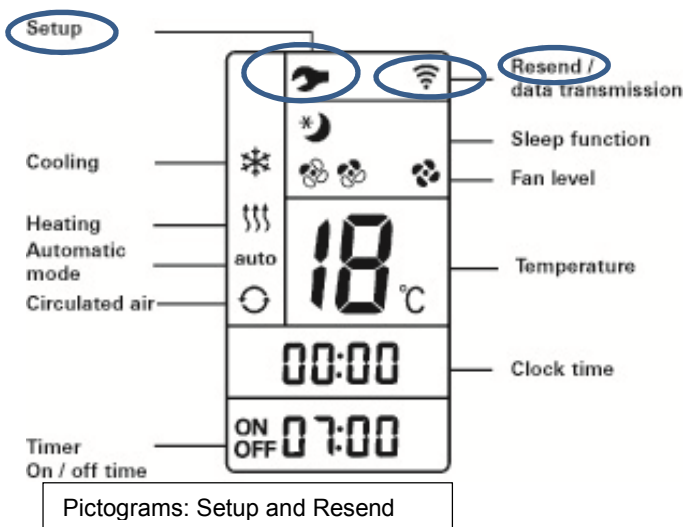
- Aventa URC: → Aventa eco or Aventa comfort
- Saphir URC: → Saphir comfort RC, Saphir comfort, Saphir compact, Saphir vario



Delivered condition:

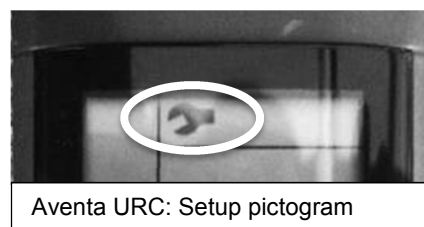
The remote control should be delivered **with the factory settings**.

In this condition (after inserting the batteries) **only** the Setup pictogram flashes.



If the Setup pictogram does not flash, a reset must be performed. Slide the bottom cover open and press the Reset button with a pointed object until all the pictograms appear on the display, then release the Reset button.

Only the Setup pictogram should now be flashing.



Tuning/setting the Universal Remote Control to the device concerned:

Point the Universal Remote Control at the air conditioning system's IR receiver.

Press and hold the Setup button. The Resend pictogram appears and begins to flash in a cycle of three short flashes followed by a brief pause. During this time the various remote control protocols are transmitted.

Release the Setup button as soon as the red LED on the IR receiver flashes*).

The air conditioning system is now paired with the remote control, and the air conditioning system starts in ventilation mode on the lowest fan level (use the remote control to turn the air conditioning system off again if necessary).

This process [confirmation: red LED flashes*]) takes

- up to **10** seconds for an Aventa
- up to **16** seconds for an Saphir

If the air conditioning system does not respond to the tuned remote control, repeat the procedure as described above (Reset → Factory Settings → ...)

Note: as soon as the Reset button is pressed, all settings are lost and the remote control must be tuned to the air conditioning system again using Setup. If the batteries are removed the remote control will remain tuned to the air conditioning system.

*) In the case of the Saphir comfort, confirmation is not provided by flashing of the red LED. Instead, the system control unit bleeps. If the bleep cannot be heard (e.g. if the air conditioning system is installed in the false floor), completion of remote control tuning is indicated by the starting up of the system in ventilation mode on the lowest fan level.